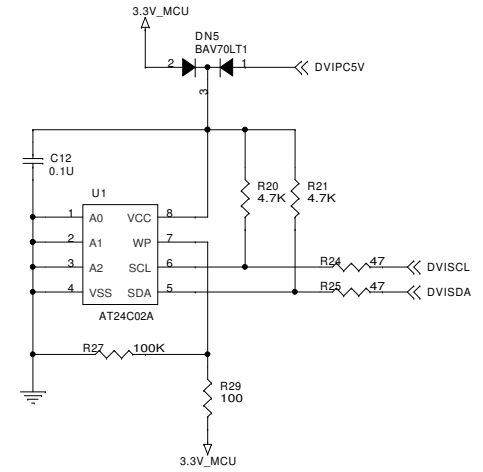
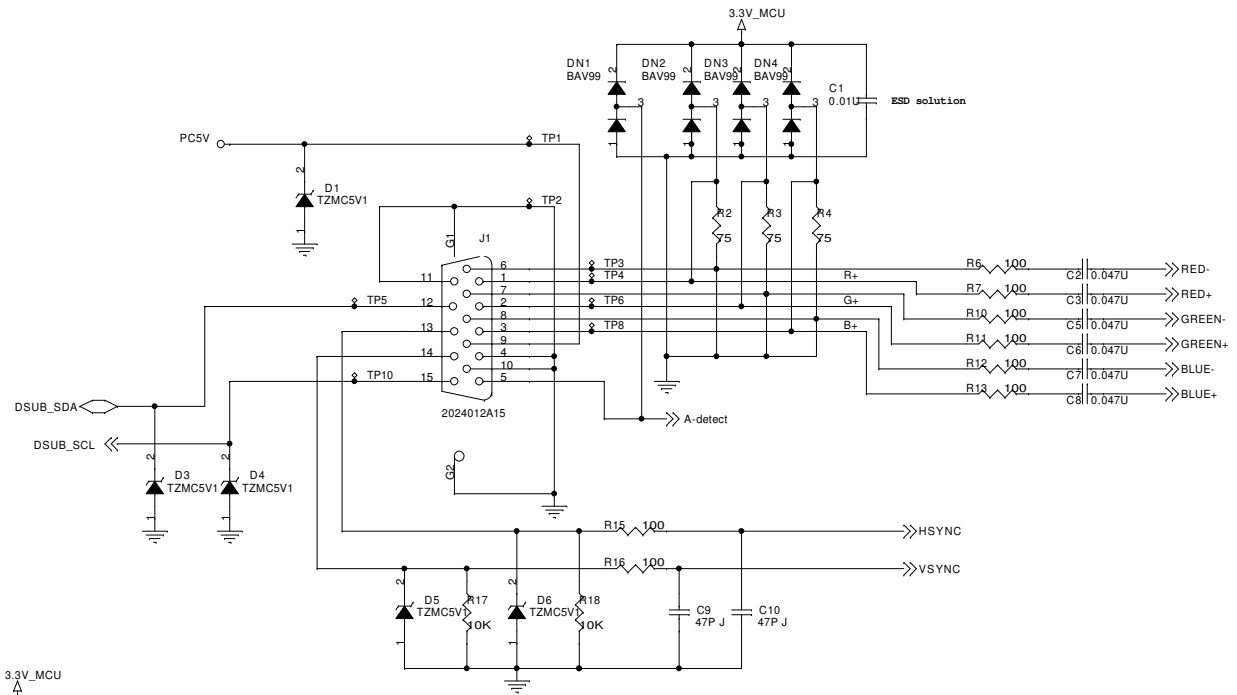
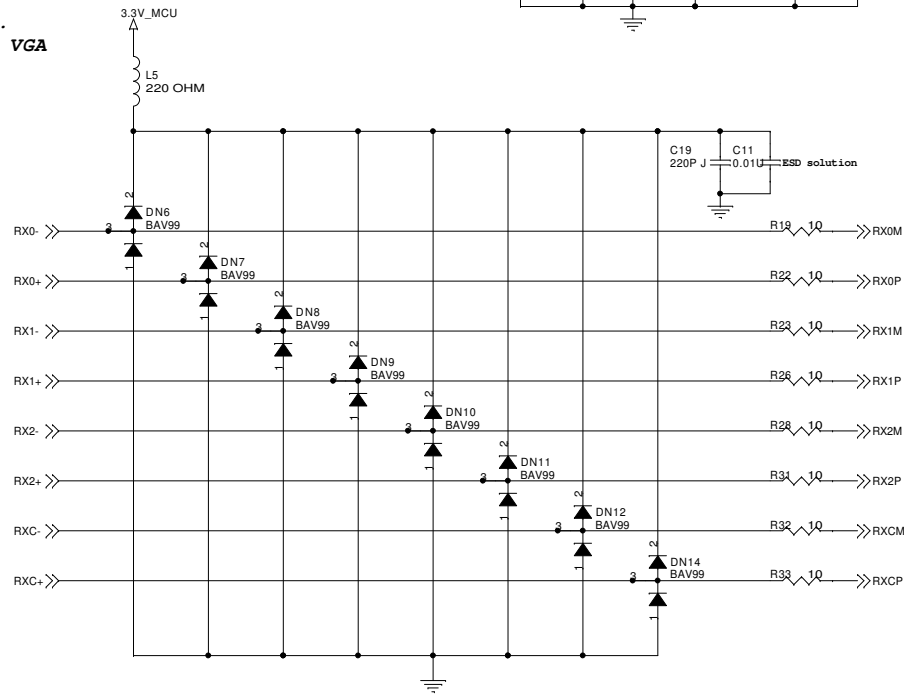
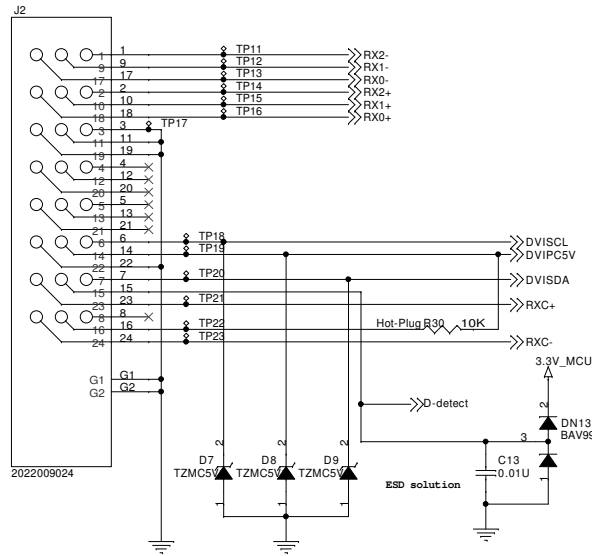


PC5V	+3.3V	PC5V_OFF
+	-	H
+	+	L
-	+	Don't care

If both PC5V and +3.3V exist:  
PC5V\_OFF should set "LOW" to prevent PC5V from entering the system.  
When only PC5V exists:  
PC5V\_OFF should set "HIGH" to provide CPU power.  
Actually, in the initial state, NO PC5V\_OFF, if VGA cable is connected, PC5V exists --> Q4 will ON.  
That will make VCPU = 3.3V.

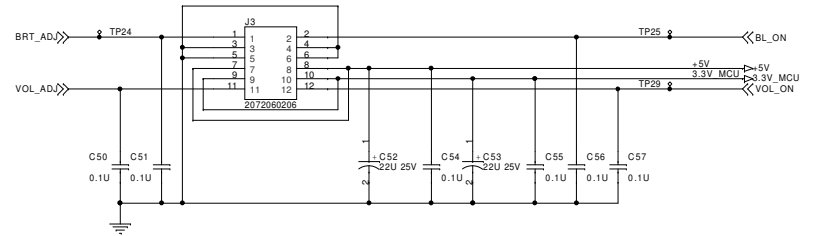
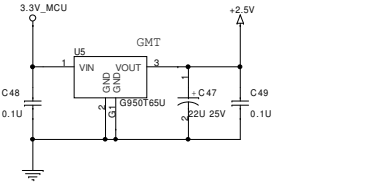
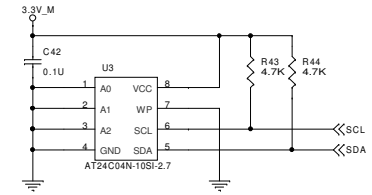
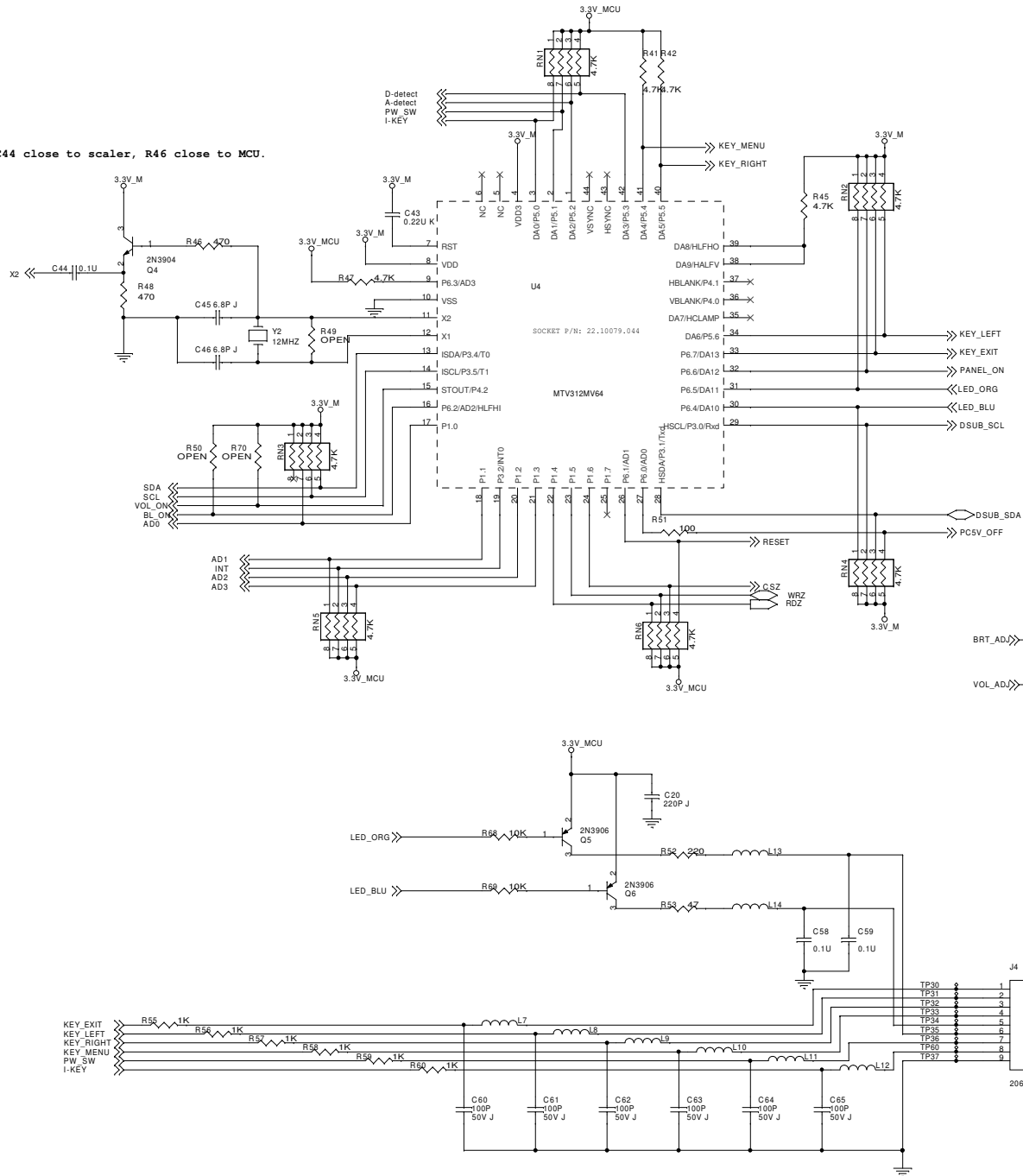


## Benq Corporation

Project Code	Model Name	OEM/ODM Model Name
99.L0Y72.001	Q7C4	NA
Title		
INTERFACE BOARD		
Size	PCB P/N	PCB Rev.
<Size>	48.L0Y01.S04	S04
Document Number	Rev.	
99.L0Y72.000-C3-304-003	2	
Date: Monday, August 02, 2004	Sheet	1 of 5
Prepared By	Reviewed By	Approved By
ANGEL HU	JEFF CHI	DAVEN WU

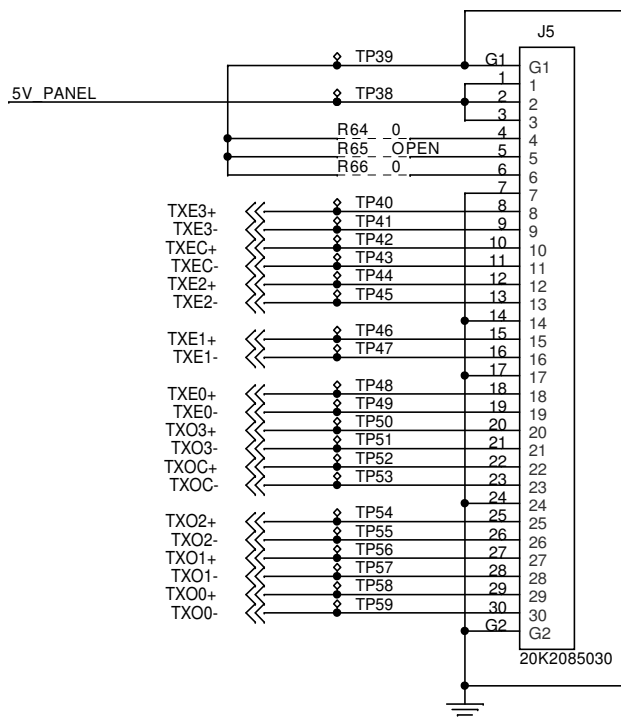
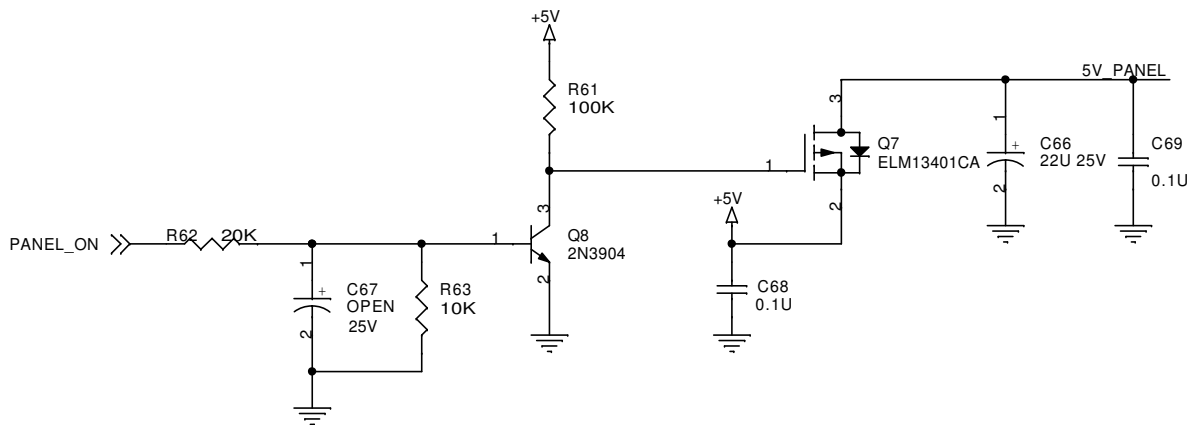


\*\*C44 close to scaler, R46 close to MCU.

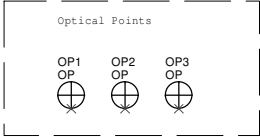


## Benq Corporation

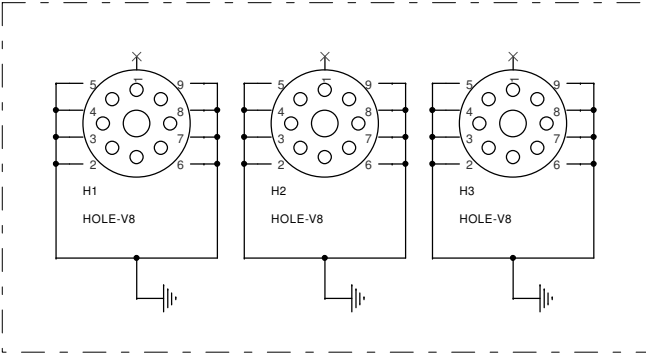
Project Code	Model Name	OEM/ODM Model Name
99.L0Y72.001	Q7C4	NA
Title		
INTERFACE BOARD		
Size	PCB P/N	PCB Rev.
<Size>	48.L0Y01.S04	S04
Document Number	99.L0Y72.000-CS-304-003	Rev.
2		
Date:	Monday, August 02, 2004	Sheet
3	of	5
Prepared By	Reviewed By	Approved By
ANGEL HU	JEFF CHI	DAVEN WU



Benq Corporation				
Project Code 99.L0Y72.001		Model Name Q7C4		OEM/ODM Model Name NA
Title INTERFACE BOARD				
Size <Size>	PCB P/N 48.L0Y01.S04	PCB Rev. S04	Document Number 99.L0Y72.000-C3-304-003	Rev. 2
Date: Monday, August 02, 2004			Sheet 4 of 5	
Prepared By ANGEL HU		Reviewed By JEFF CHI		Approved By DAVEN WU



Screw Holes



**Benq Corporation**

Project Code		Model Name		OEM/ODM Model Name	
99.L0Y72.001		Q7C4		NA	
Title					
INTERFACE BOARD					
Size	PCB P/N	PCB Rev.	Document Number	Rev.	
<Size>	48.L0Y01.S04	S04	99.L0Y72.000-C3-304-003	2	
Date: Monday, August 02, 2004			Sheet	5	of 5
Prepared By		Reviewed By		Approved By	
ANGEL HU		JEFF CHI		DAVEN WU	